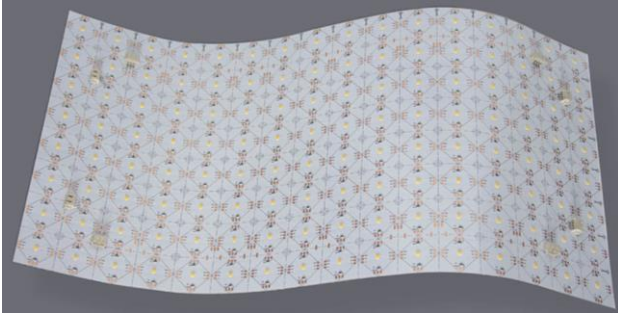


LED Lighting

CT Tuneable Flexible LED Sheet PLS480x240-128CT

Features

- Ultra-thin flexible LED sheet
- 3M adhesive tape for bonding to flat or curved surfaces
- Adjustable colour temperature
- 2-in-1 LED package for good colour mixing
- 16 x 8 LED matrix
- Cuttable every 30mm
- Constant Voltage 12VDC / 24VDC
- CRI > 80
- 120° beam angle
- Dimmable
- Power input via onboard connectors or solder pads
- L70 30,000 hours



Description

Designed for illumination where an adjustable colour temperature is required in surface area backlighting applications the PLS480 series flexible LED sheet comprises of an array of 128 LED emitters to provide a bright and even surface illumination. Applications include mood lighting and lightbox projects.

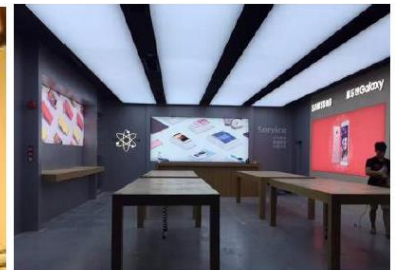
Part No.	Voltage (V)	Power (W)	CCT (°K)	Luminous Flux (lm)	Efficacy (lm/W)
PLS480x240-128CT-12V	12VDC	WW: 16W CW: 16W	2700 – 6500K	WW: 1440 CW: 1600	WW: 90 CW: 100
PLS480x240-128CT-24V	24VDC	WW: 16W CW: 16W	2700 - 6500K	WW: 1440 CW: 1600	WW: 90 CW: 100

Notes:

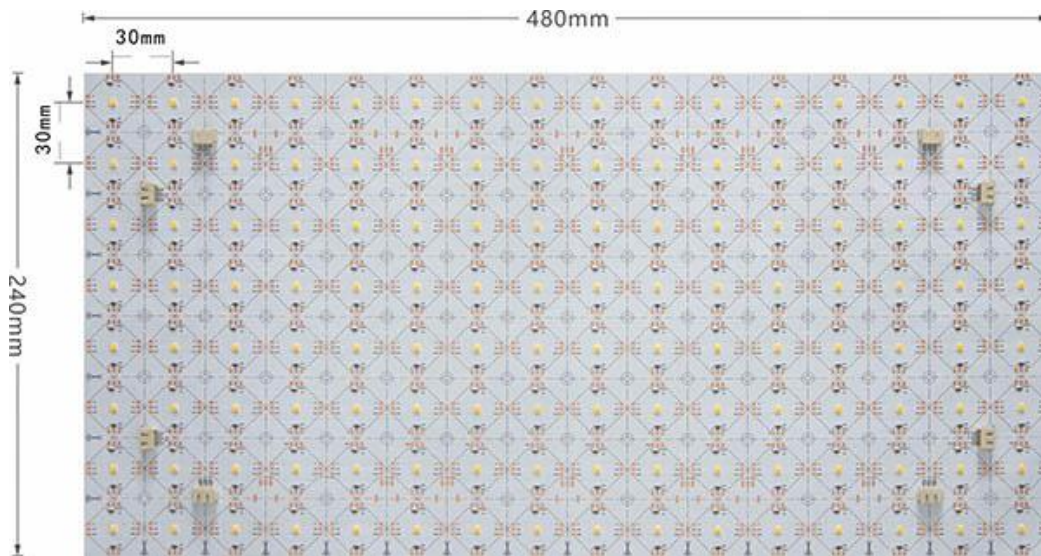
IP Rating: IP20 Non waterproof
Mechanical: Minimum bend radius 40mm
LED pitch 30mm
Connection: JST XHP-3
Weight: 190g

Applications include:

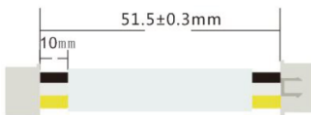
- General Lighting
- Backlighting
- Light Box illumination
- Retail illumination
- Signage



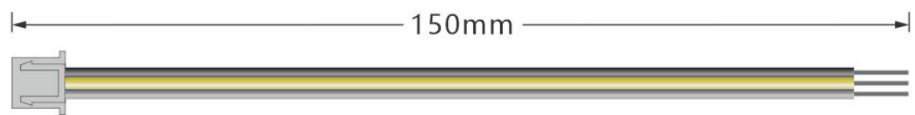
Dimensions



Connection

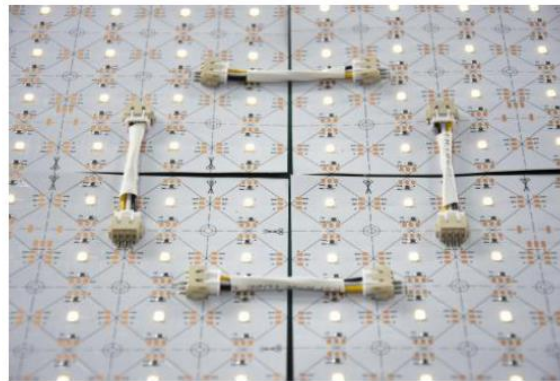


Link cable



Input cable

Sheets may be connected together to increase the backlighting area



Notes

1. Observe operating voltage and connection polarity
2. Install power supplies and controllers in a ventilated, dry environment.
3. Select power supplies with 20% power headroom over the system total wattage.

We offer a range of 2-channel Adjustable CT LED controllers including DALI, RF and DMX protocol
Please refer to our web site at www.plusopto.co.uk